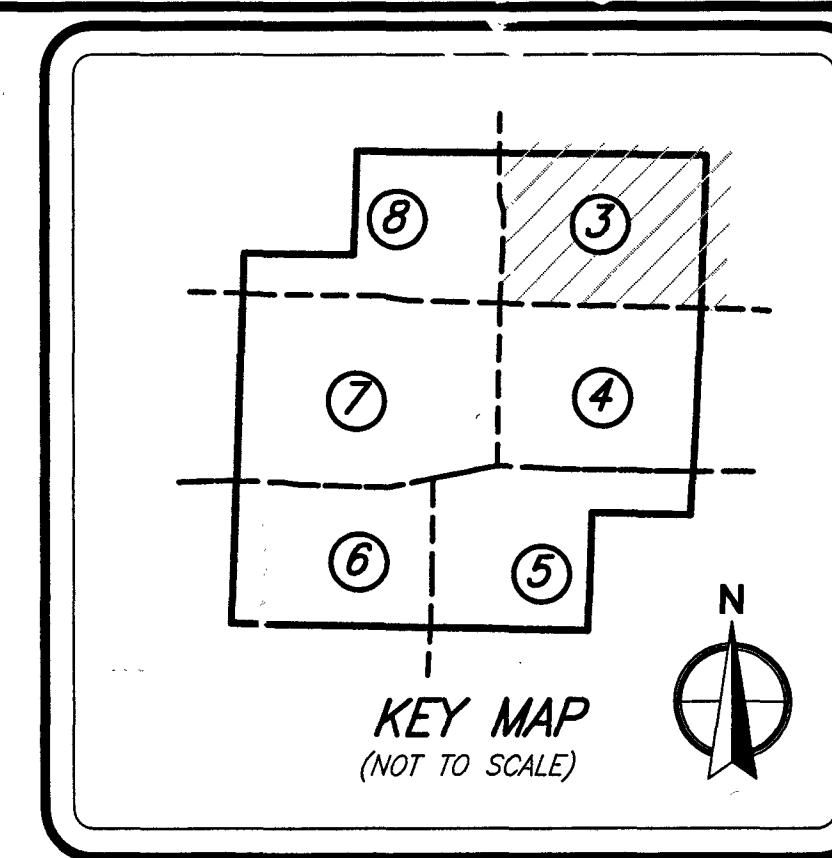


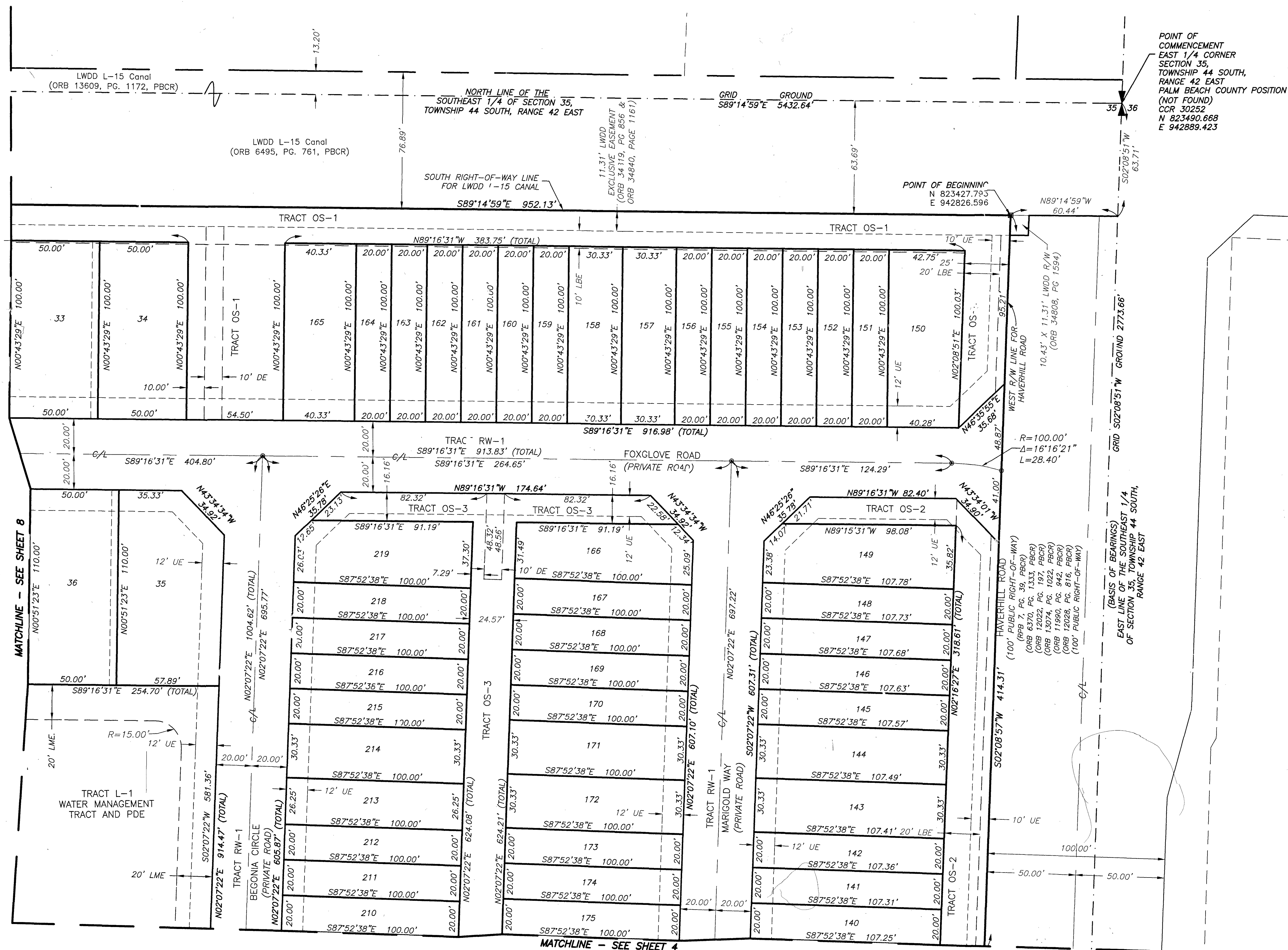
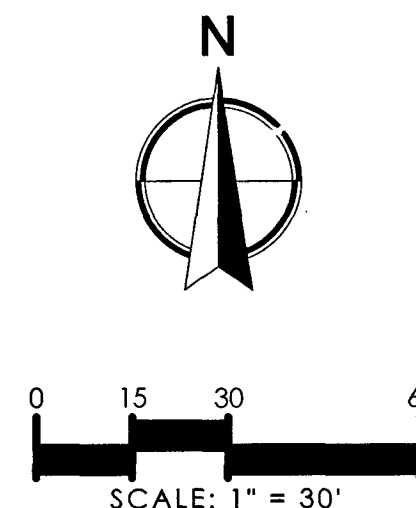
BLOSSOM TRAIL

BEING A PARCEL OF LAND LYING WITHIN A PORTION OF THE NORTHEAST QUARTER (NE 1/4) OF THE SOUTHEAST QUARTER (SE 1/4) OF SECTION 35, TOWNSHIP 44 SOUTH, RANGE 42 EAST, CITY OF GREENACRES, PALM BEACH COUNTY, FLORIDA.



129

SHEET 3 OF 8 SHEETS



POINT OF COMMENCEMENT EAST 1/4 CORNER SECTION 35, TOWNSHIP 44 SOUTH, RANGE 42 EAST PALM BEACH COUNTY POSITION (NOT FOUND)
CCR 30252
N 823490.668
E 942826.596

LEGEND

- AE = Access Easement
- C/L = Center Line
- CCR = Certified Corner Record
- CONC. = Concrete
- CB = Cord Bearing
- CD = Cord Distance
- Δ = Delta (Central Angle)
- DE = Drainage Easement
- FND. = Found
- LSE = Lift Station Easement
- LME = Lake Maintenance Easement
- LMAE = Lake Maintenance Access Easement
- L = Length of Arc
- LBE = Landscape Buffer Easement
- LWDD = Lake Worth Drainage District
- NAD = North American Datum
- (NR) = Non Radial
- OHE = Roof Overhang Easement
- ORB = Official Records Book
- ⊙ = Permanent Control Point (PCP)
- PBCR = Palm Beach County Records
- PCN = Parcel Control Number
- PDE = Public Drainage Easement
- PG. = Page
- PB = Plat Book
- PRM = Permanent Reference Monument
- R = Radius
- OHE = Maintenance and Roof Overhang Easement
- R/W = Right-of-Way
- (TYP.) = Typical
- UE = Utility Easement
- = Set 4"x4" Concrete (PRM) W/Aluminum Disc Stamped "LB 7055 PRM" Unless Otherwise Noted
- = Set Nail & Brass Disc Stamped "LB 7055 PRM" Unless Otherwise Noted

NOTE:

COORDINATES SHOWN ARE GRID COORDINATES DATUM - NAD 83 (1990 ADJUSTMENT)
STATE PLANE FLORIDA EAST ZONE
TRANSVERSE MERCATOR PROJECTION
LINEAR UNIT = U.S. SURVEY FEET
ALL DISTANCES ARE GROUND
SCALE FACTOR = 1.000034952
PLAT BEARING = GRID BEARING
GROUND DISTANCE X SCALE FACTOR = GRID DISTANCE



2035 Vista Parkway, West Palm Beach, FL 33411
Phone No. 866.909.2220 www.wginc.com
Cert No. 6091 - LB No. 7055

THIS INSTRUMENT WAS PREPARED BY KELSEY M. SMITH, P.S.M. PROFESSIONAL SURVEYOR AND MAPPER, LICENSE NO. 7096 FOR THE FIRM: WGI, INC.